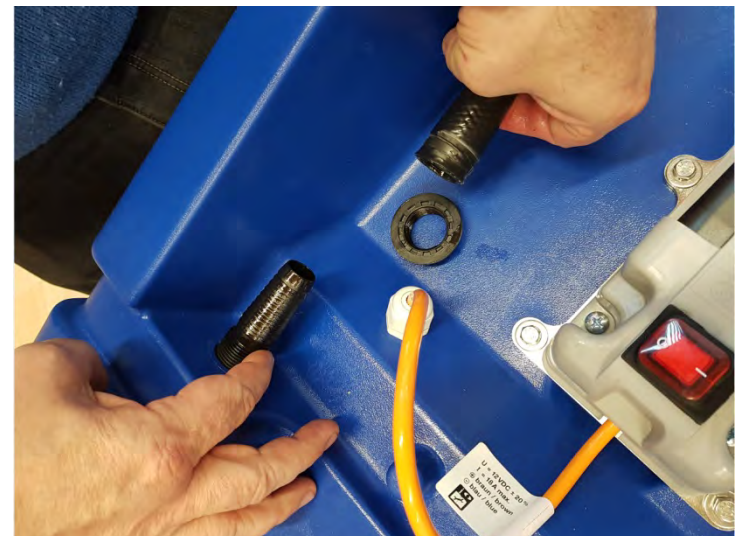
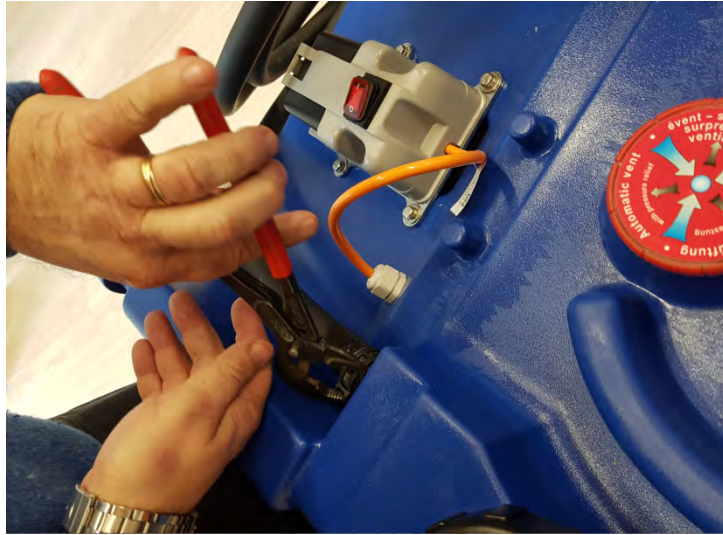


# How to change the SP30 pump in CEMO tank or a trolley?

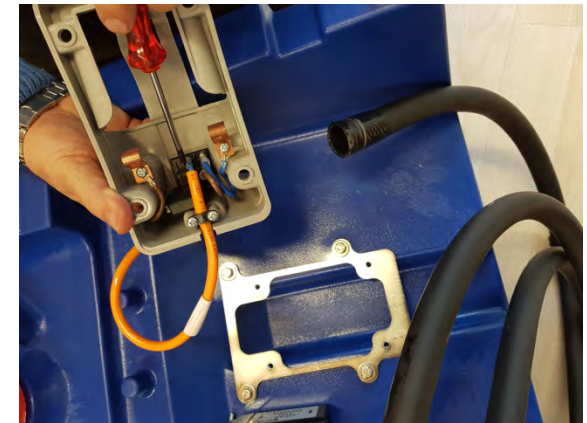
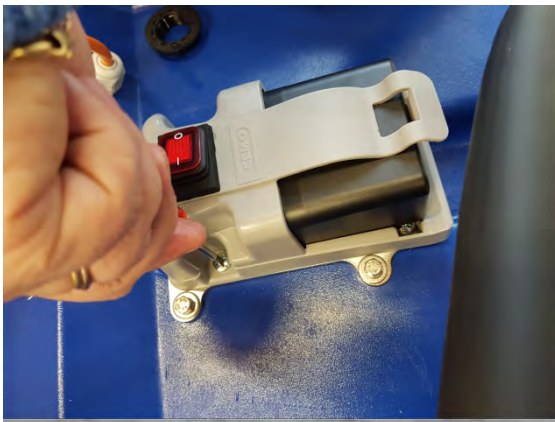
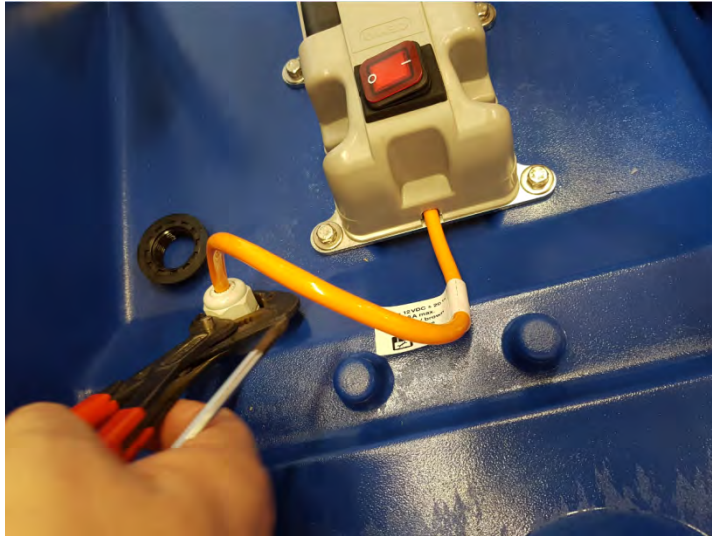


# Mobile Easy 125 or 200 liters (AdBlue, Diesel)

1. Remove the hose clamp, remove hose from hose barb, unscrew the fitting nut to loosen the pump from the tank



2. Unscrew the grey cable gland to free up the orange electricity cable from the tank. Remove the other side of the cable from the switch located in the battery holder (4 screws to remove the battery holder), pass cable through the cable gland into the tank.



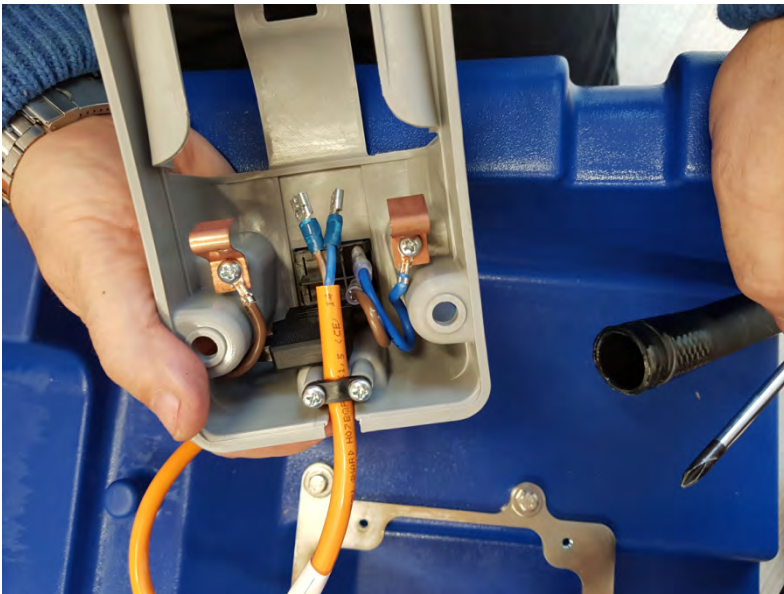
- 3. Now you can remove the pump in order to replace it**
- **Unscrew the suction hose clamp, change the orange pump, tighten the clamp/hose on the new pump.**
  - **Lead the new orange electricity cable from inside through the cable gland (marked in red), connect the new electricity cable to the switch in battery holder (next page)**



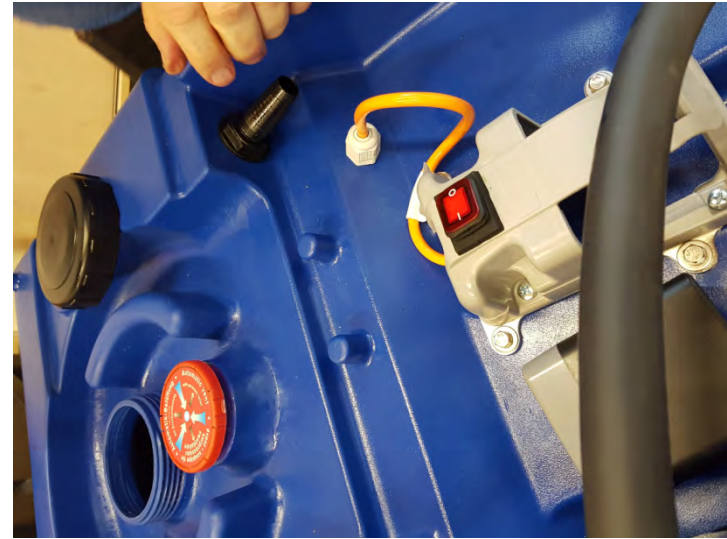
**4. Now you can connect the new electricity cable to the battery switch.**

**→ blue wire next to the other blue wire and brown next to brown wire**

**→ screw the battery holder back in place**



5. Place the pump/hose assembly in the tank, introduce your arm holding the 90° elbow connection into the tank big opening and insert the hose stem through the tank suction hole so that it comes out from the red marked hole. Tighten the hose stem with the tank using the nut. Slide the hose onto the hose barb and place the clamp back in it's original position.



# Trolley 60 or 100 liters (AdBlue, Diesel)



**1. Remove the hose and the electricity cable from the trolley in order to take the pump out and replace it**

**2. See the instructions of the Mobile Easy for changing the battery connections**

